

IMPACTING OUR

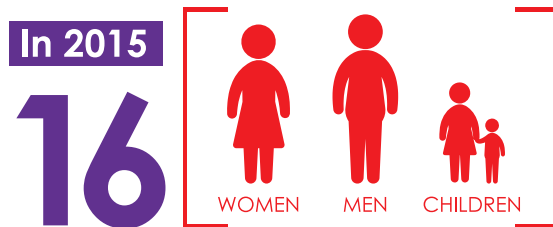


TOGETHER



Mission

To stop domestic violence abuse for everyone through intervention, education and advocacy.



lost their lives to domestic violence in Broward County.

We dedicate this annual report in their memory.

Letter From Leadership

Impacting Our Community Together

We are so pleased to share this annual report with you – “Impacting Our Community Together.”

While it's hard to know that domestic violence affects so many of our neighbors here in South Florida, we also know there is hope. Thanks to you, this is a story of strength and second chances. The thread woven throughout this report is community. Ours is a community that for more than 40 years has come together to empower survivors of domestic abuse as they take that first step toward a life free of violence.

Domestic violence is a community problem and the good news is that our community also holds the key to solutions. All of us can make a difference.

Last year, through the support of donors, community partners, and volunteers, we served 2,798 women, men and children, answered more than 20,000 calls for help to our 24-Hour Crisis Hotline, provided nearly 30,000 nights of safe shelter to more than 700 women, men, and children, and a total of 29,454 hours of therapy and advocacy. More than 40,000 people heard messages about how to recognize the signs and break the cycle of violence.

Moving forward, we remain focused on our mission to stop domestic violence for everyone through intervention, education and advocacy. We now have more comprehensive services for children, including early childhood therapy – a first for a domestic violence center in Florida. Working as part of a community-wide task force, access to safety and protection for survivors has been made easier. We added and expanded partnerships with law enforcement, Department of Children and Families (DCF), Broward County Public Schools and ChildNet, among many others.

On behalf of the women, men and children who are helped because of your support – thank you. The impact you're making in the fight against domestic violence can be seen in the faces of children who are no longer afraid to go to bed at night, and felt across school campuses as young adults learn that love shouldn't hurt.

Thank you for making our community great, together.



Mary Riedel
President and CEO

Phyllis Thomas
Chair, Board of Directors



24-Hour Crisis Hotline

Calling the 24-Hour Crisis Hotline is often the first time a survivor reaches out for help. Our highly trained advocates are available 24/7 to talk confidentially with anyone experiencing domestic violence, seeking the resources of our community partners, in need of information, or questioning unhealthy aspects of their relationship. The Hotline provides lifesaving tools and immediate support to enable survivors to find safety and live lives free of abuse.

Women
In
Distress



24 Hour Crisis Hotline

has one of the highest call volumes in the state and receives as many calls as the State of Florida's hotline.

With
Your
Support

We provided a lifeline to more people in need



Answered 1,700
to
2,000
calls
per
month



Community Partnership

To better serve survivors in the communities they live, a community Task Force on Petitions for Injunctions was formed, led by Sunrise Mayor Mike Ryan, the Police Chiefs' Association and the Broward Sheriff's Office in cooperation with Howard Forman and the Clerk of Courts office and Women In Distress to expand access for survivors seeking restraining orders. Through their work, injunctions are now available at the West Courthouse (Plantation), in addition to the main Courthouse in downtown Fort Lauderdale. In just a few months after opening, more than 250 petitions were taken at the Plantation location. The goal is to expand the program to South (Hollywood) and North (Deerfield Beach) courthouses.



Emergency Shelter

One step into the Emergency Shelter and you'll see that it's much more than a shelter . . . it's a community. Childcare is a priority for many since 50 percent of those living in the shelter are children. Food, clothing and household supplies are also provided. Women In Distress is committed to helping all individuals living in unsafe situations achieve independence, including those with special needs. Our services are also available to male survivors, the LGBTQ community, and those with disabilities.



We helped more  families reach self-sufficiency



Community Partnership



We have joined forces with Henderson Behavioral Health, a not-for-profit behavioral healthcare system providing comprehensive recovery-focused services, to develop and implement an innovative new program providing substance abuse counseling for survivors battling addiction.



Outreach Services

Many families impacted by domestic violence may not need shelter, but are in need counseling and advocacy services. These services, offered at locations throughout Broward County, include safety planning, counseling, support groups and therapy for adults and children, including infants.

Building strong community partnerships in cities with the highest number of domestic violence victims is key to addressing the need in our community.



Women In Distress
continues to expand
services at satellite
locations to bring help
directly where it is
needed most.

With
Your
Support

We made families

STRONGER



Helped survivors create **5,159** safety plans



Community Partnership



This year we partnered with the City of Hollywood Police Department on their Offender Focused Domestic Violence Initiative (OFDVI) program, the first of its kind in Florida, which identifies the most repetitive and violent domestic violence offenders. This new approach to stop the repeat cycle of violence provides services and resources to survivors.



Therapy Program

Mental health conditions such as depression, anxiety, and trauma are common for many adult and children survivors of domestic violence. Emotional scars often remain long after they escape the abuse. The Women In Distress Therapy Program helps survivors learn how to build new and healthy relationships by providing empowerment-based professional counseling services, including individual therapy and support groups, to survivors and their children. Our innovative Infant and Early Childhood Therapy Program addresses the unique trauma and stress levels infant survivors experience.

Strengthening families and providing early intervention are key to breaking the cycle of abuse for the next generation.

We are the only provider
of early childhood therapy
for domestic violence survivors



UNDER
THE
AGE
OF



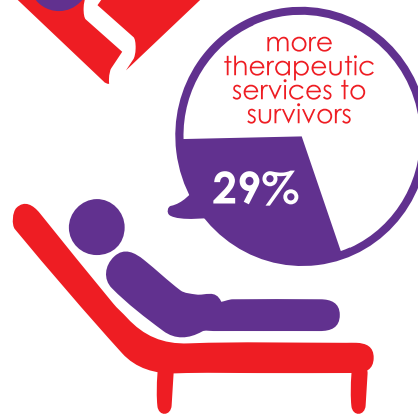
in Broward
County & in the
State of Florida



**With
Your
Support**

We helped families

heal together



Community Partnership



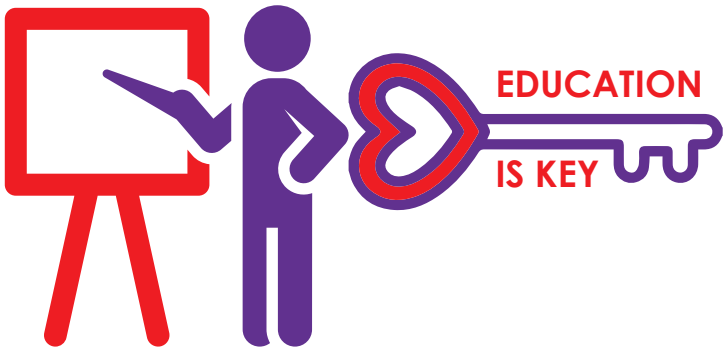
With support from the Florida Coalition Against Domestic Violence, we expanded the Child Protective Investigative (CPI) program which previously provided services at the Broward Sheriff's Office to survivors and their children who are involved in open child abuse investigations. Services are now also provided at Childnet, which partners with us on safety planning, child dependency cases and investigations.



Education & Prevention

Understanding the dynamics of domestic violence is key to breaking the cycle. Our Education & Prevention team provides education to youth and adults about the dynamics of intimate partner violence, teen dating violence, and the boundaries and expectations within a healthy relationship. This curriculum is also provided to Broward County Public Title 1 Schools focused on changing social attitudes towards violence. Trainings are also provided to businesses, professional and community groups.

Uniting with those on the front lines, like the Broward Sheriff's Office and local municipality law enforcement agencies, to provide continuing education on the intricacies of domestic violence has been the key to ensuring survivors get the help they need.

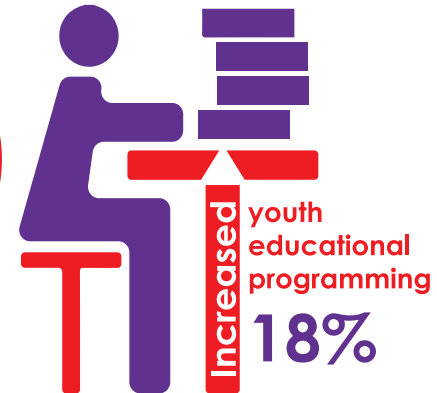
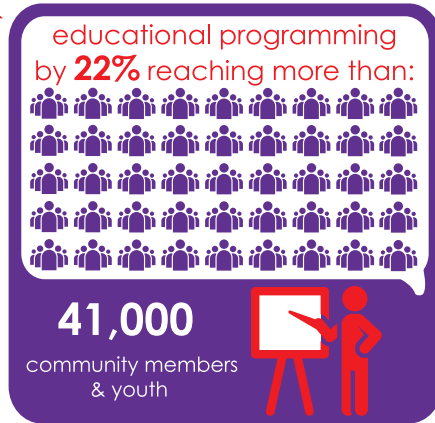


With
Your
Support

We broke the cycle of violence through education



Increased



Community Partnership



Working together with the City of Lauderhill Police Department to break the cycle of violence, we organized a series of events in the city this year aimed at middle and high school students. The Imagine program at Parkway Middle School discussed topics such as healthy relationships, teen dating violence and sexual violence. At the teen dating violence awareness at Lauderhill 6-12, students took healthy dating pledges. Other events included a youth summit in the city.



Leadership

Our Board members are men and women from all walks of life, from law enforcement professionals to survivors of domestic violence. They reflect the communities we serve and create a substantial and ongoing impact in our community.



Women In Distress'
dedicated Board of Directors & Trustees work together with staff to fulfill our mission of keeping families safe.



Board of Directors

EXECUTIVE COMMITTEE

Phyllis Thomas – The Thomas Family Foundation – Chair
Anjali Besley – Bank of America – Immediate Past Chair
Karen Leikert – Wells Fargo – 1st Vice Chair
Michael Farver – Farver Family Foundation –
2nd Vice Chair
Krista Kennedy – The ADT Corporation – Treasurer
Anne B. Chervony – BFC Financial – Secretary
Kathleen Grace – United Capital Partners –
At-Large Member
Mary Riedel – Women In Distress – President & CEO

BOARD OF DIRECTORS

Kim Bentley – JM Family Enterprises
Jennifer Saltz Bullock – Stearns Weaver Miller Alhadeff
& Sitterson, P.A.
Angelo Castillo – Broward Sheriff's Office
Stephanie Coker – Broward Sheriff's Office
Howard C. Forman – Broward County Clerk of Courts
Pauline Grant – North Broward Medical Center
Karen Grosby – Nova Southeastern University
Patricia Maczko – Comerica
Leslie Nixon – Miami Dolphins, Ltd.
Steve Pomeranz – United Capital Partners
Audrey Ring – Community Leader
Marla Schaefer – MSW Capital, LLC
Andrew Scott – Scott Roberts & Associates, LLC
Tami Clemenza-Wilson – Morrison, Brown Argiz & Farra, LLC

HONORARY BOARD MEMBER

Janet A. Boyle, In Memorium

BOARD OF TRUSTEES

Carla Albano – Community Leader
Dr. Richard Bernstein – Broward College
Cincy Bibliowicz – iPic Entertainment
Maria Delegal – Anthony's Coal Fired Pizza
Joanne Gaines – Centennial Bank
Linda Garrett – Community Leader
Elizabeth Grieb – Community Leader
Hal Herman – Worth International
Cynthia Imperato – Community Leader
Wendy Lieber – Content Bacon
Silvia Mansons – Community Leader
Beatriz Martinez-Prillaman – Community Leader
Charlotte Mather-Taylor – Ann Storck Center
Kim Miller – Ink Link Marketing
Carol Molnar – Comerica
Lynne Prescott – Cancer Treatment Centers of America
John Primeau – Centennial Bank
Audrey Ring – Community Leader
Karen Sylvester – JM Family Enterprises
Judith Thiel – Philanthropist
Terri Warren – Community Leader
Kerian Worley – CBS Radio



Partners

COMMUNITY PARTNERS

Thank you to our community partners who provide important resources and services to help our families.

- 2-1-1 Broward
- A Child is Missing, Inc.
- ABWA Coral Springs
- Barry University
- Boys and Girls Club of Broward County
- Broward County
- Broward County Courthouse
- Broward County Jail Facility
- Broward County Public Schools

- Broward Domestic Violence Council
- Broward Health
- Broward Human Trafficking Coalition
- Broward Police Chief Association
- Broward Regional Health Planning Council
- Broward Sheriff's Office
- Broward Victim's Rights Coalition
- Catholic Charities
- CareerSource of Broward
- Carlos Albizu University
- ChildNet
- Children's Harbor
- Children's Home Society

Children's Legal Services
Children's Services Council of Broward
City of Coconut Creek Satellite Center
City of Fort Lauderdale
City of Hallandale Beach
City of Hollywood
City of Miramar
City of Pembroke Pines
City of Plantation
City of Sunrise
City of Wilton Manors
Coast to Coast Legal Aid Services
Community Foundation of Broward
Consolidated Credit Counseling Solutions
Department of Children and Families
Family Success Center
Flipany
Florida Atlantic University
Florida Coalition Against Domestic Violence
Florida Department of Health in Broward County
Florida International University
Gulf Coast Jewish Family and Community Services
Hallandale Police Department
HEART Alliance
Henderson Behavioral Health
Hispanic Unity
Holy Cross Hospital
Jack & Jill Children's Center
Jewish Family Service of Broward County
KID Broward County
Legal Aid Service of Broward County
Lynn University
Memorial Healthcare System
No More Tears

Nova Southeastern University
St. Thomas University
State Attorney's Office – Domestic Violence Unit
SunServe
Susan B. Anthony Recovery Center
The Pride Center at Equality Park
The Salvation Army of Broward County
Tomorrow's Rainbow
Trinity International University
United Way of Broward County

IMPACT PARTNERS

Uniting together with businesses in our community is fundamental to supporting the families we serve. Thank you to our partners who have made the commitment to ensure we are able to provide vital services to survivors of domestic violence.

The Jim Moran Foundation
Leo Goodwin Foundation
Florida Coalition Against Domestic Violence
Janet A. Boyle, In Memoriam
JM Family Enterprises & SE Toyota Distributors
Broward County
Publix
Yellow Cab
ADT
Miami Dolphins
Wells Fargo
Sun Sentinel
Bank of America
Signature Grand
The Thomas Family Foundation
Memorial Healthcare
Ultimate Software
AutoNation



Thrift Store

When a survivor makes that difficult decision to leave their abuser, they often flee with only the clothes on their back. The Women In Distress Thrift Store, located in Margate, provides survivors and their families with clothing, furniture and household items free of charge, helping them rebuild their lives. Visit us at 1372 N. State Road 7, Margate, 33063 or call (954) 975-7425.

**MAKE A
DIFFERENCE**

Items donated
by our community
are sold



100%

of the net proceeds
support services
provided by
Women In Distress

With
Your
Support



We provided opportunities and second chances



Community Partnership



“Supporting our community is an integral part of the Citrix culture and a testimony to our values. We strive to enrich and empower our global communities through our people, our partners and our technology. We are proud to provide financial support and volunteers to Women In Distress. We believe in the mission of WID as it helps protect families from domestic violence. Our employees have spent countless hours sorting and organizing items in the thrift store, gratified that their efforts are making a difference in the lives of those most vulnerable.”

– Jo Moskowitz, Citrix



Financial Report

Revenue TOTAL = \$5,778,099



Government Grants

\$2,582,078



Gifts, Corporation & Foundation Contributions

\$1,540,225



Thrift Store & Other In-Kind Donations

\$759,355



Special Events

\$490,743



Thrift Store Revenue

\$394,384



Other Revenue

\$11,314

Expense TOTAL = \$5,704,522



Program Services

\$4,612,617




Fundraising

\$602,099



Management & General

\$489,806



**A SOCIETY
GROWS GREAT
WHEN OLD MEN
PLANT TREES
WHOSE SHADE
THEY KNOW
THEY SHALL
NEVER SIT IN.**

– GREEK PROVERB

Consider a Lifetime Gift to Support Women In Distress

Many people choose to leave a charity their ultimate gift because they have supported it during their lifetime and the investment they've made is important. If this is the case with you, we ask that you consider expressing your commitment to the mission of Women In Distress through a planned gift in your will and estate plans. Once you have provided for loved ones in your will, you may want to include a gift of money, stock or property to Women In Distress.

Your gift will be a lasting tribute to your concern for those affected by domestic violence, while guaranteeing our long-term future. For further information on how to include Women In Distress in your will and estate plans, please contact Michael Barron at mbarron@womenindistress.org or (954) 760-9800, ext. 1256.

"I have supported Women In Distress for years and know that they do great work with the survivors, especially the children. Putting them in my will was a natural next step. I now know that my lifetime will continue to make a difference long after I am gone."

– Anonymous Donor



Thank You

Thank you to our donors for your financial and in-kind donations. Your support makes it possible for us to provide the services and programs that help fulfill our mission to end domestic violence abuse for everyone. While we only have space to publish those donors who have contributed at the \$100 level and above between July 1, 2015 – June 30, 2016, we sincerely appreciate every donation. We apologize for any unintentional errors or omissions.

\$50,000+

Janet* and Jack Boyle
Broward County Board of County Commissioners
City of Fort Lauderdale
Florida Coalition Against Domestic Violence
Hoffman Revocable Family Trust
James W. Graham Irrevocable Trust
Leo Goodwin Foundation, Inc.
Mary N. Porter Fund of the Community Foundation of Broward
State of Florida – Victims of Crimes Act
Sun Capital Partners, Inc.
The Jim Moran Foundation, Inc.
Thomas Family Foundation
Walmart Foundation

\$25,000 - \$49,999

AutoNation, Inc.
B & L Service, Inc. - Yellow Cab
Gore Family Memorial Foundation Trust
Helen Ingham Foundation
JM Family Enterprises, Inc.
Marion M. Washburn Revocable Trust
Nova Southeastern University College of Dental Medicine
Publix Super Markets
RJ Worldwide, LLC
Roselyn Meyer Family Foundation, Inc.
Stearns, Weaver, Miller, Weissler, Alhadeff & Sitterson
Sun-Sentinel Children's Fund, a McCormick Foundation Fund
The Batchelor Foundation, Inc.
Lorraine Thomas

Sondra R. Title
Wells Fargo Foundation

\$10,000 - \$24,999

ADT Security
Bank of America Charitable Foundation, Inc.
Broward County Clerk of Courts
Broward Sheriff's Office
Carnival Corporation & plc
Citrix Systems, Inc.
City of Deerfield Beach
City of Hallandale Beach
City of Hollywood
City of Pembroke Pines
City of Plantation
City of Pompano Beach

Colony West Women's Golf Group
Cosmetic Solutions
Crate and Barrel
Elite Island Resorts
Estate of Eileen Langevin*
Estate of Susan Rantanen*
Fiesta Restaurant Group, Inc.
Fritch Family Foundation
H. Wayne and Marti Huizenga
Jarden Consumer Solutions Community
Jewish Communal Fund
Jody Kaminsky
Miami Dolphins, Ltd.
Nova Southeastern University
Arlene Pecora
David and Lynn Sobocinski
Steiner Beauty Products, Inc.

The Colin Brown Foundation of the Ayco
Charitable Foundation
The Domestic Violence Fund for Women In Distress
of the Community Foundation of Broward
Don and Judy Thiel
The Estate of Minnie Horowitz*
The Glick Family Foundation
The Martha G. Moore Foundation
The Mary Kay Foundation
Town of Davie
United Way of Broward County, Inc.
William R. Watts Foundation, Inc.

\$5,000 - \$9,999

Brian and Susan Baker
Stephen and Michele Ball
BankUnited
Bracha Genossar Estate
Bright Horizons Foundation for Children
Broward Health
Caterpillar Foundation
Mary F. Cheaney
City of Coconut Creek
City of Lauderhill
City of Oakland Park
Comerica Bank
Coral Springs Community Chest, Inc.
First Data Corporation
David and Carol Geller
Jesse and Patti Holshouser
Holy Cross Hospital, Inc.
Hudson Family Foundation
Hull Family Foundation
John E. and Nellie J. Bastien Memorial Foundation
John H. Rau Fund of the Community Foundation
of Broward
Suzanne Klimke
Paul and Karen Leikert
Mary Houlston MacDonald Fund for Women of
the Community Foundation of Broward
McGladrey, LLP
Memorial Healthcare System
Mercantile Commerce Bank
Sandra Moss
Peter and Sandra Nori
Norman and Bettina Roberts Foundation, Inc.
Patriot National, Inc.
PDQ of Pompano Beach
Publix Super Markets Charities, Inc.
Rubin and Gladys Wollowick Family Foundation
Cynthia Russell-Cohen
Signature Grand, Ltd.
SLED Club
Kenny and Sandra Tate
Tate Family Foundation

Ted Deutch For Congress Committee
Thomas Group Int., LLC
TJX Foundation, Inc.
Trafalgar Capital Advisors, Inc.
Ultimate Software
United Capital Financial Advisers, LLC
Norm Vincoff
Walter G. Lohr, Jr. Fund
Maria Schaefer and Steven Weishoff
Martin and Elaine Weinberg

\$2,500 - \$4,999

Carla Albano and George Cann
American Express Charitable Fund
Judge Arlene and Paul Backman
Thomas and Kathy Bambenek
Stephen Beinke
Bike Tech
Bi-Lo Winn-Dixie Foundation
Bluegreen Corporation
Rita Case
City of Dania Beach
City of Weston
City of Wilton Manors
Comcast
Sean and Madeleine Dugan
Florida Power & Light Company
Matthew Fox
Mark and Linda Garrett
Hal and Lois Herman
Gabriel and Cynthia Imperato
Jones Lang LaSalle Americas, AAF
Joyce Kaufman
Norman and Marilyn Lefkowitz
Minto Foundation, Inc.
Morrison, Brown, Argiz & Farra, LLC
David S. Pearl
Maureen Pentland
Steven L. Pomeranz
Reeder Cattle Company
Rowley Portraiture
SABA Temple #186
SBA Communications Corporation
Andrew and Kimberley Scott
Sophil, Inc.
Lee and Franny Stotsky
The Farver Family Foundation
Town of Lauderdale By The Sea
Town of Pembroke Park
Valley Forge Fabrics
Barbara Wall
Walter Duke & Partners
Women's Independence Scholarship
Program, Inc.

\$1,000 - \$2,499

Aberdeen Golf & Country Club
Matthew Adler
Alfred Angelo Newco, Inc.
Allied Kitchen and Bath
Allstate Foundation
Atlantis Paradise Island Resort
A. E. Baker
Bank of America Corporate
Gregg and Cindy Bibliowicz
Max and Vicki Bluestein
Caroline Bolf
Boca Raton Resort & Club
Beverly Bromberg
Brown & Brown Insurance
Bruce and Sandra Brown
Marie Buckley
Philip and Jennifer Bullock
Centennial Bank
Circle of Friends Foundation
City Furniture
City of Cooper City
City of Lauderdale Lakes
City of Margate
City of Miramar
City of North Lauderdale
City of Sunrise Police Department
City of Tamarac
Cynthia G. Clayton
Harvey and Laurie Cohen
James and Jan Cummings
Dade Paper Company
Frank Dolph
Belkis DeChurch
Disability Assistance, Inc.
Stephan and Joan Drescher
Dunkin' Donuts
Eleanor Elgart
Elizabeth Friedman O'Connor Family
Foundation, Inc.
Enterprise Holdings Foundation
Sherry Factor
Carole Falkanger
Florida Youth Football League
Jennifer Fogelquist
Fred Stevens Tree Company
Howard and Margie Giffen
Gloria P. Goldberg
Gerald and Nikki Goldsmith
Pauline Grant
GRC Wireless, Inc.
Tom and Polly Gruber
Greenspoon Marder Law
Walter Lohr and Billie Grieb
Hank Grooms

Karen Grosby
Charles and Ellen* Hasseltine
Jacquelyn Haywood
Aly Heimovics
Martin and Susan Hirsh
Home Depot Interiors
Pamela Hurley
Ink Link Marketing
Joan and Milton Baxt Foundation, Inc.
John Knox Village
Johnathan S. and Patricia G. England Foundation
Mike and Carmen Kahmann
Angela Kelsey
Krista and Scott Kennedy
Lisa J. Kitei
George and Linda Krebs
Judith Lamb
Peter and Gloria Lazazzara
Cindy Lemak
Kenneth and Linda Madoff
Elaine Madonna
Charlotte Mather-Taylor
Medic Pharmacy and Surgical, Inc.
Millennium Kingdom International Ministries, Inc.
Kim T. Miller
Samuel and Adrianne Millman
Pauline Murdock
Bill Norkunas
Pamela Palumbo
Delia Passi-Smaller
Dennis and Judy Paul
Mary Pergoda
Donna Petricone
Melvin and Sheila Prager
Premiere Produce
Daniel M. Provenzano
Natalie Quinn
Leora Ratzon
William and Audrey Ring
Risk Management Services, LLC
Eric Ruder
Mark and Gail Saltz
John and Lois Schmatz
Patrice Schwartz
Seminole Hard Rock Hotel & Casino
Arthur and Barbara Sheer
Todd Shulby
Tonya Springer
St. Ambrose Council of Catholic Women
Mary M. Steff
Gina L. Stelnik
Stephanie Stipkovich
Susan E. Sachs Fund of the Community
Foundation of Broward
Syma Herzog

The Atlantic Hotel and Spa
 The Breakers Palm Beach
 The Brunetti Foundation
 The Cassill Foundation, Inc.
 The Edward A. & Catherine L. Lozick Foundation
 The Faith Center Ministries
 The Gaddis Family Foundation, Inc.
 The Harry T. Mangurian, Jr. Foundation, Inc.
 The Kelsey Group
 The Levy Family Foundation
 TherapeuticsMd
 Tomorrow's Rainbow, Inc.
 Meredith Torstensson
 Town of Southwest Ranches
 Uniform Advantage
 United Way of Palm Beach County, Inc.
 University Middle School - NSU
 Terri S. Warren
 Bruce Weber
 Elaine Weinberg
 Wells Fargo
 Westglow Resort and Spa
 Jane Wexton
 Kathryn Wisne
 Women's Council of Realtors, Broward Chapter
 YOLO Las Olas
 Joanne Young
 Bernie and Irene Zimberg
 Betsy Zucker

\$500 - \$999

AAA Auto Club South
 Felicia Alvaro-Kennedy
 Atlantic Coast Kayak
 Lydia Bart
 Scott and Pamela Baynes
 Martin Behar
 Bud and Kim Bentley
 BNY Mellon Community Partnership
 Marvin and Catherine Bolinger
 Broward County Parks and Recreation Division
 Broward FL Chapter of The Oncology
 Broward Health North
 Sherwin and Sondra Burman
 Gale M. Butler
 Gabriella Campos
 Joel and Delores Carnavale
 Marie Cassou
 Betsy Castenir
 Angelo Castillo
 Charles and Mildred Schnurmacher
 Foundation, Inc.
 Marion Chase
 Chef Alan Bergman Catering
 Church By The Glades

Clarke Chiropractic & Rehabilitation
 Tami Clemenza-Wilson
 Alvin and Jacqueline Cohen
 Jonathon and Patricia Cole
 Congregation Kol Tikvah
 Dale Conner
 Mary Constantino
 Coral Ridge Country Club
 Gary and Monica Correll
 Coverall North America, Inc.
 Creative Stucco and Design, Inc.
 Dax Copying and Printing, Inc.
 Deerfield Beach Chamber of Commerce
 Maria Delegal
 Hugo Diez
 Don Law Golf Academy
 Dr. Paffy's Dental Boutique
 Ira and Sara Jane Drescher
 Mike and Debbie Edlin
 Embassy Suites Deerfield Beach Resort
 Marianne Ferro
 Florida Department of Corrections
 Lori A. Ford
 Fort Lauderdale Country Club
 Fraternal Order of Police Lodge 32
 Fresh Point South Florida
 Iris Garcia
 Gig and Marcia Gersh
 Kathleen A. Grace
 Greater Miami & The Beaches Hotel
 Association, Inc.
 Greenberg Traurig
 Hilton Key Largo Resort
 Human Resources Association of
 Broward County
 Mervyn and Rahle Hurwitz
 Infinite Health and Wellness
 Jackson Holdings
 JMG Entertainment, LLC
 Kapila Mukamal
 Marissa Kelley
 Kids In Motion
 Sheila Kirshner
 Beth Klein
 Christine Laud
 Dr. Lisa Learn
 Sean Lebowitz
 David Lebowitz
 Jonathan Meyerer and Tabitha LeTourneau
 Alan and Marsha Levy
 Jacob and Harriette Lion
 Jeffrey and Barbara London
 Macy's
 Elaine Madonna
 Ana Mallaco

Marriott Boca Raton
 Vivian Maza
 Kathleen McCarthy
 Octavia McDougale
 MedPro Healthcare Staffing
 Miami Herald Charities
 Tom and Ginny Miller
 David J. Milum
 Natalie C. Moore
 Roy and Sharron Munro
 Nature's Products, Inc.
 Phyllis Neiberg
 Stefanie Newman
 Nova Southeastern University Public Safety
 Linda S. O'Mara
 Orange Theory Fitness
 Bryan and Shani Oulton
 Nancy Oyarz
 Mark and Tiffany Panciera
 Parkland Children's Academy, Inc.
 Danay Pelaez and Vanessa Molina
 Pina Fashions, Inc.
 John and Rebecca Primeau
 Matthew and Joyce Quinn
 Jonathan and Francine Ralph
 Steve and Sheryl Ranzman
 William and Mary Riedel
 Robert O. Law Foundation, Inc.
 Gennaro and Madeline Rondinelli
 Sara Jane Rose
 Debra Ryan
 Paul Sallarulo
 Fran Satalino
 Shannon Schnuerer
 Eugene* and Joyce Seitz
 Mitchell Shea
 Pauline M. Smith
 Sandra Spencer
 Roberta Stennet
 Joe and Linda Stepenovitch
 Sutherland Healthcare Solutions, Inc.
 Irene Sutter
 Sweeter Days Bake Shop
 Takata Protection Services
 The Benevity Community Impact Fund
 The Joan Dalianis Foundation, Inc.
 The Merck Foundation
 The Ritz Carlton Orlando Grand Lakes
 The Roasted Fig
 The Weinstein Mitzvah Foundation, Inc.
 Jeffrey Tobias
 Travelpro International, Inc.
 Darya Troyanovskaya
 Tyco Integrated Security
 UFC Gym

W Fort Lauderdale
 Kathy Walsh
 Shelly Waltman
 Barbara Waring
 Wells Fargo - Las Olas
 West Wind Inn
 Whole Foods Market
 Joanna Williams
 Darren W. Wobb
 Shaymee Wolinsky
 Women Certified, Inc.
 Kerian Worley
 Zonta Club of Deerfield Beach, Inc.

\$100-\$499

A Aaron's Environmental Services, Inc.
 Gail Abramowitz-Oliver
 Randee M. Abramson
 Fredericka F. Achin
 Pina Ackerman
 Ford Adam
 Alexandre Adam
 Aimee Adler
 Katie Adler
 Dana Adler
 Aetna Foundation
 Lashrecse Aird
 Robert and Lynda Alcabes
 Alex and Ani
 All County Health Care, Inc.
 All Saints Catholic Church
 Sophie Allemand
 Alpert Enterprises
 Alpha Chi Omega Broward County Alumnae
 Chapter
 Marilyn Altshuler
 Lisa Alvarez
 Reba K. Amdur
 American Legion Auxilliary Unit 310
 American Preferred Readers Services
 Sandra Andersen
 Anthony's Runway 84 Restaurant
 Michael and Lynn Aptman
 Juan C. Arias
 AT&T United Way Employee Giving Campaign
 August Chiropractic, Inc.
 Gail Auguston-Koppen
 Brian Auster
 Avanti Limousine
 B Ocean Fort Lauderdale
 David and Carola Bamberger
 Baron, Silver, Stevens Financial Advisors, LLC
 Marcia Barry-Smith
 Erik Bartenhagen
 Hershey Basile

Nancy Baskies
 Amy Batchelder
 Bath & Body Works
 BB&T
 Beard Marine A/C and Refrigeration, Inc.
 Charles W. Beasley
 Deborah Beinke
 John and Sandra Benz
 Marlene Berger
 Janice Bergman
 Alan and Robin Berkowitz
 Richard S. Bernstein
 Oscar and Lourdes Betancourt
 Lawrence and Dulce Blacher
 Marvin Blanford
 Leah Blasberg
 Wayne and Rebecca Bliss
 James and Nancy Blosser
 Blue Moon Fish Co.
 BocaTEC
 Holly Bodenweber
 Bogenschutz, Dutko, & Kroll, P.A.
 Bonaventure Country Club
 Carole Boucard
 Amy Bracken
 Bright Horizons School
 Brimstone Woodfire Grill
 John Brotherton
 Broward Center for the Performing Arts
 Broward College - Central Campus
 Walter J. Browne
 Steve Bruce
 Susan Brust
 Denise Bryan
 Lynn Bryann
 Mary Ellen Buccellato
 Justin Buis
 Clay D. Burch
 Sharon Burch
 Stacy C. Burgess
 Katrina B. Burgess
 Alvin M. Burkett
 Ann Marie Burris
 Busch Gardens
 Jennifer Buttrick
 Gina Cadogan
 Cafe Vico Restaurant
 Eliberto Campos
 Julia Caner
 Car Program, Inc.
 Caribbean Sistahs
 Carlton and Graham Retail Constructors, Inc.
 Carnegie Hall
 Glen Carpenter
 Peter Caruso

Irene Casale
 Barbara Castell
 Cathedral Church of God
 Cato Insurance Group, Inc.
 David O. Charland
 Valerie Chavin
 Lee Chaykin
 Christine Cherepy
 Manoushka Chery
 Oscar A. Chiarella
 City College Ambassadors Association
 Deanne Clark
 ClubLink US Corporation
 Estelle Cohen
 Yaniv Cohen
 Lee Cohen
 Daniel and Selma Cohen
 Scott Cohen
 Mark and Kathleen Cohen
 Charles Colella
 Theresa Coletti
 Columbiettes of Coral Springs
 Shannon Conness
 Carol Conti
 Joy Cooper
 Rita Cooperman
 Coral Springs Community Church, Inc.
 Maria Cornelius
 L. Beverly Corridon
 Samuel and Maureen Cory
 Diana Cosobea
 Keith Costello
 Kim Costello
 Gerald and Elizabeth* Covello
 Sandra Covert
 S. Curtis Creasy
 Renate A. Cropper
 Crystal Lake Golf Club
 Michelle Cundriff
 Nancy J. Curtin
 Miriam C. Cutfler
 Shaula Daley
 Jody Dancer
 Jesse Daniels
 Dayton Foundation Depository, Inc.
 Donna DeChant
 Deer Creek Country Club
 Delores DeFerrari
 Perla Del Pino-White
 Robert and Joanne DeLizza
 Gregg DeSantis
 Desantis Management, LLC
 Daniel and Cynthia Diana
 Raquel Diaz
 Richard and Judith DiDonato

Gwendolyn Dillard-Martin
 Bernard Doddo
 Natalee Doenig
 Dolphins Plus Bayside
 Brian Donaldson
 Sean Donato
 R. D. and Alice Donn
 Terri Dorta
 David Dorta
 Sierra Dowling
 Ron Dreyfus
 Drift Beauty and Wellness Spa
 Bernard and Sandra Driscoll
 Jack Drury
 Colette Durst
 E. T. Legg & Co.
 Ella Eddy
 Joyce B. Edelson
 Greg and Mary Helen Edwards
 Juli Edwards
 Edwin Watts
 Ruth Eikevik
 Einstein Bros. Bagels
 Susan Eisler
 Emmanuel Christian Center
 Empire Education Group
 Entic
 Penny Eppy
 Russell Everatt
 Ewa Wieruczewska Clinic
 Lisa Faina
 John and Mary Farquhar
 Glen and Jessica Ferguson
 L. M. Fernandez
 Rose M. Ferrara
 Kimberly D. Fields
 Financial Strategies Group, Inc.
 Catherine T. Finnegan
 Katie Finneran
 Finster Murphy's
 First Presbyterian Church of Fort Lauderdale
 Clayton Fischer
 Ann Flannery
 Keith Foglesong
 Denise Foley
 Howard and Brenda Forman
 Seth Frank
 Fraternal Order Orioles Ladies Auxiliary #258
 Trevor Fried
 Friends of Birch State Park
 Carl Fuhs
 Fundzio, LLC
 Funky Buddha Brewery, Inc.
 Jan Furtado
 Terri Gaddis

Jesse and Susan Gaddis
 Gaia Dance & Unity Center
 Galleria Fort Lauderdale
 Jeffrey Gally
 Miriam Garcia
 Rolando Garcia
 Mel Garcia
 Erika Garey
 Genoa Employment Solutions, Inc.
 Kent Genzlinger
 Lisa M. George
 Robby George
 Heath and Christine Gieson
 Gilbert's Body and Fitness
 Judy Giller
 Cherie Gilmour
 Juan and Leticia Ginart
 Jean Giovannelli
 Nancy Gissing
 Give With Liberty
 Glacier Ice and Snow Arena
 Rikki Goldenberg
 GolfTEC Boca Raton
 Rita Gombar
 Ibis Gonzalez
 Jean S. Gordon
 Jennifer Gottlieb
 Bettye Grant
 Michael and Anna Grant
 Greek Islands Taverna
 Allen and Judith Green
 Michelle Green
 Ralph A. Greene
 Stephen M. Greep
 Arnold and Barbara Grevior
 Grille 66 and Bar
 Kadysha Guerin
 Guidant Management
 Susan Gutman
 Guy Strum, P.A.
 Rochelle M. Haber
 David Hall
 Halo Hair Salon
 Rich and Linda Halperin
 Melvina Hammett
 Theresa Hamood
 Gary and Cindy Handin
 Patricia Handy-Johnson
 Harvey Hankin
 Karen Hansen
 Dr. Jennifer L. Harper
 Sandy Harrington
 Mary Harris
 Walter D. Harrison
 Chris Harrison

Susan Hart
 Antoinette Hartman
 Mary Harwood
 Lillian Haywood
 Lisbeth Heggerick
 Leigh Ann Henderson
 Susan L. Henness
 Robert and Barbara Henninger
 David Herge
 Adam and Karen Herman
 Brian Hero
 Heron Bay Golf Club
 Jodelle D. Herrera
 Anne S. Hilmer
 Patricia Hoecker
 Harold and Sandra Hoke
 John Holbrook
 Thomas and Linda Hopfenspinger
 Jill Horowitz
 House of God Church
 William and Kim Howard
 Hudson at Waterway East
 Betty Hughes
 Josephe Epstein and Kip Hunter
 Eric Hutchinson
 Indian Spring Country Club
 Insurance Auto Auctions, Inc.
 Interface Properties, LLC
 In-To-Space, LLC
 J.P. Taravella High School
 Willie Jackson
 Cindy Jacobs
 Lori Jacoby
 Elvire Jacques
 Ellen Jaffe
 Kenneth and Victoria Jaffie
 JB and MK Pirtle Charitable Foundation, Inc.
 JB's on the Beach
 Mary D. Jenkins
 Karri M. Jessell
 Jewish Community Centers of South Broward, Inc.
 Lesley Jones
 Jan C. Jordan
 Donna Joseph
 Joyful Sales, Inc.
 Juda, Eskew & Associates P.A.
 Jason and Lauren Julius
 Ron Kanowitz
 Jene Kapela
 James and Judy Kapper
 Cindy Kashdin
 Bradley Kast
 William P. Kaufmann
 Keiser University
 Matthew and Christa Kennedy

Selima Khan
 Elijeana King
 Jean-Ellen King
 Carol Kirkpatrick
 Elena Kirsch
 David Kistle
 Kiwanis Club of Deerfield Beach, Inc.
 Bonnie Klein
 Debra Kleinberg
 Linda L. Kleinman
 Erin Knight
 William Kobau
 Bernard Koether
 Peter Kong
 Cindy Kosor
 Eileen Krakowski
 Jack and Rosa Kravitz
 Mark Krill
 Mark and Marie Krizner
 Janet Krop
 La Doce Vita
 Elaine Lacker
 Janice LaHaye
 Bettina Lambrechts
 Robert Lamendola
 Pamela Landi
 Carolyn Lane
 Las Olas Gondola, Inc.
 David P. Lauer
 Lawlor, White & Murphey
 Suzan Lee
 Larry and Sally Leichter
 Monica Lemelman
 Malcolm A. Leonard
 Dianne Letzelter
 Gabby Leveillee
 Romy Levin
 Edgar Lewandowski
 Michael and Marilyn Libman
 Lenore Lieberman
 Richard and Leslie Linevsky
 Gloria Lipman
 Margie Longstreth
 Lucia Lopez
 Anthony and Diane Lostumbo
 Francisco Luciano
 Bonnie MacCormack
 Gianella Magliato
 Daniel Maier
 Wayne Malik
 Jay Maltby
 Charles Mandell
 Lynn Mandeville
 Robert Manne
 Silvia Mansons

Shani Marcos
 Margaritaville Hollywood Beach Resort
 Karla Markin
 Edward and Evelyn Marko
 Ed Marquez
 George Martin
 Lauren Martin
 Thomas J. Martinelli
 Becky Martinez
 Michelle Martinez
 Sonia Martinez
 Beatriz J. Martinez-Prillaman
 Bertha Martos
 Douglas and Kari Marx
 Maitte Masiello
 Albert P. Massey
 Joanne Massey-Dean
 Maury River Investment Co.
 Barbara McClary
 Elizabeth McConville
 Mary Mckay
 Edward D. McKenzie
 Mark and Mindy McLaughlin
 Dana McLean
 Janet McMillan
 Medieval Times
 Merrell United Methodist Women
 Rosalyn Meyers
 Carlota Meyjonade
 Miami Seaquarium
 Charles Michelson
 Mickey's Caring Service, Inc.
 Lauren Miller
 Kimberly Miller
 Ian Miller
 Sharon Miller
 Melissa Milroy
 LaurieAnne Minoff
 Marvin Mitchell
 Upendra Mody
 Monterey House Women's Group
 Vanessa Montes
 Octavian Moody
 Rose Moore
 Lorie Moran
 Morgan Stanley
 MovieTickets.com, Inc.
 Elizabeth Moya
 Jeanne Moyer
 Ms. Molly Foundation
 Ana Muniz
 Maria G. Murray
 Mutual of America Foundation
 Daniel Nagler
 National Council of Jewish Women, Inc.

Kathleen Nemeth
 Anabel I. Nemrow
 Ian Nestler
 Robert Nestor
 New Jerusalem Primitive Baptist Church
 Sonia Nieves
 North Broward Business and Professional Women
 Notre Dame Club of Fort Lauderdale
 Joanne Nowlin
 Rob Nunziata
 Oceans 234
 Ryan O'Donnell
 OPI Product, Inc.
 Orangebrook Golf and Country Club
 David and Beth Orlove
 Robert and Merry O'Rork
 Anne L. Orvieto
 Ilona Osinski
 Osprey Point Golf Course
 Our Savior Lutheran Church
 Lawrence and Marsha Pacernick
 Palm Chiropractic Center
 Panaretto Restaurant and Pizzeria
 Deborah Pariser
 Jan Parke
 Parkway Christian Church
 Parkway Christian Preschool
 Shauntay Parrish
 Robert Parrish
 Patchington - Pompano Beach
 Lorna Patrick
 Lee Patterson
 Dr. April Patterson
 Joel and Marlene Patterson
 Jacquesta Paul
 Cyndi Pavlik
 Pearls Foundation
 Stephanie Pearson
 Mary Pedrosa
 Gilford and Valerie Pellerin
 David and Tina Peretz
 Harvey and Barbara Peretz
 Rosa M. Perez
 D. Clinton Perkins
 Cynthia Peterson
 Sharon Picolo
 John Pisapia
 Laura Pita
 Ida Plala
 Plantation Presbyterian Church
 L. M. and Janet Ploucha
 Fred Polsky
 Pompano Beach Doll Club
 Orenthian Porter
 Marta Prado

Robert Prager
 Randy and Linda Prange
 Priority One Credit Union of Florida
 Professional Management Services
 Eileen Prus
 Publix Aprons Cooking School
 Tony Puleo
 Terry Rabinor
 Rainbow Palace
 Rapids Water Park
 Glenys Redman
 Howard Reese
 Mayra Regalado
 Regent Bank
 Harry and Ursula Reiner
 Steven D. Reiss
 Robert Reklinski
 Residence Inn Marriott
 Ana Reyes
 Pafi Rice
 M. T. Richards
 Mary Jo Ridenour
 Judith Rios
 Diana Rios
 James H Ritchie
 James H. Ritchie, Jr.
 Rhonda Ritchie-Aslaksen
 Sandy Rizzo Weiner
 Beverly M. Roberts
 Rooms To Go
 Joel Rosado
 Richard Rosenzweig
 Rosie's Bar and Grill
 Vida Rouse
 Suzanne Rowe
 Running Wild, LLC
 Lysandra Russell
 Ruth's Chris Steak House
 Barbara Sabin
 Jennifer Sakaris
 Maria Salgado
 Mimi Sall
 Donna Salsburg
 Eris Sandler
 Pamela Sarafan
 James B. Sotovsky
 Saxon Business Systems
 I. G. Scheibel
 Joy Schnabolk
 Vivian Schneider
 Paul Schneider
 Schram Family Charitable Fund
 Jenny Schuermann
 Paul A. Schuler
 Cindy Schutt

Dorothy Schwartz
 Scully Company
 Mayor John P. Seiler
 Serafina Waterfront Bistro
 Sondra Servais
 Servants of Friends, Inc.
 Darlene Sesto
 Anil and Annu Sharma
 Carole Sheets
 Tracy Ann Shelbourn
 Michele Shepardson
 Vivica Sherman
 Sherry A. Fell
 Louise E. Shindler
 John Shoenfelt
 Herman* and Dorothy Shooster
 Rhoda Shustrin
 Silicon Valley Community Foundation
 Barry Silverman
 Natalie Silverstein
 Barbara J. Simmons
 Haydee Simon
 Marilyn C. Simon
 Christina Singh
 Joe and Kathy Skipper
 James Slater
 Lisa C. Smith
 Jennifer Smith
 Valerie Smith
 Smoke BBQ
 Jack and Barbara Sobel
 Moe Sohail
 Karen Solomon
 David Solomon
 Dave Spector
 Gail Spier
 Stuart H. Spitz
 Leslie A. Sponder
 Raymond and Barbara Sponder
 Sprinklermatic Fire Protection Systems, Inc.
 St. Hugh's Alumnae Association of Florida
 Jon Stage
 Tracey H. Statzler
 Jacob D. Steiger
 Stacy Steinberg
 Robin Sterne
 Kristen Stewart
 Sari Stoll
 Victor and Darlene Stosik
 Peter Stramaglia
 Erick Strati
 Strawbridge Family Foundation
 STS Tax Services, Inc.
 Mindy Sturgis
 Richard Sturm

Pete Sudler
 Roxanne Sullivan
 Amanda Sullivan
 Hilda R. Susi
 Barbara J. Sutton
 Jennifer Swanson
 Michelle Sweet
 Karen A. Sylvester
 Barbara Tamchin
 Laura Tarlowe
 Mary Anne Tate
 James Tate
 Lou Taylor
 Katina Taylor
 Temple Beit Hayam, Inc.
 Thasos Greek Taverna
 The Club at Emerald Hills
 The Field Irish Pub and Eatery
 The Island Women's Club
 The Marlins Foundation
 The McDonald Family Foundation, Inc.
 The Pillars Hotel
 The Royal Pig
 Genevieve Thompson
 Kathleen Thomsen
 Timpanos
 Gloria Tolar
 Tommy Bahama
 Lynn Torrent
 Viviana Torres
 John Traver
 Kathy Tricomi
 Eileen Trower
 Scott Tsukuda
 C. Tuckman
 Two Men and a Truck
 Tyco Employees Political Action Committee
 Tyco Matching Gifts Program
 Shelly Tygielski
 Tyrone Hill Mentoring Kids Charitable
 Foundation Corp.
 Jesse Tyson
 UBS Employee Giving Program
 Dr. Robert and Marlene Uchin
 Rita Ullian
 Union Temporary Services, Inc.
 United Way of Greater Philadelphia & SNJ
 United Way of Metropolitan Dallas, Inc.
 Universal Orlando Resorts
 USply
 Lois Utell
 George and Mary Uznis
 Judith Valkanet
 Fabienne Varela
 Theresa A. Voynik

Jane Waechter
 Karin Wagner
 James Walker
 Walmart Store # 8173
 Lois Waltzer
 Bharat Warrier
 Gerri Washington
 Lawrence and Ann Wasserman
 Jennifer Watson
 Mary Weber
 Stan and Rita Weinstein
 Barton and Shirley Weisman
 Glenn Wells
 Wells Fargo Community Support Campaign
 DoTopia
 George and Monica Wesolowski
 Trae West
 Christina Weston
 Weston Cosmetic Surgery
 Elaine Wheatley
 Samuel S. White
 White Sands Realty Group, Inc.
 Dr. Diane Whitehead
 Lorraine Wilde
 Iris Wilder
 Caren Williams
 Heather-Ann Williams
 Betty S. Williams
 Mark Wilson
 Stacy Win
 Winterfest, Inc.
 WM Kretchman Ladies Auxiliary #730
 Women Pastors Christian Fellowship, Inc.
 Susan Woodnicki
 James and Carola Woodworth
 Smith S. Worthly
 Georgiana Wright
 E. Thomas and Alice Wright
 Kimberly Wright
 Wright By The Sea Resort
 Wyndham Deerfield Beach Resort
 Mark Yagher
 Richard J. Zaden
 Ava Zaken
 Dennis Zalupski
 Maria Zamora
 David Zangrilli
 Phyllis J. Zervas
 Eve Zimmerman
 Zoeli Pilates & Wellness
 Zola Keller
 Kevin Zona
 Zonta Club of New Providence

COMMUNITY

Get Involved.
Donate.



SUPPORT



DONATION DRIVE



VOLUNTEER



SPREAD THE WORD



WOMEN IN DISTRESS
OF BROWARD COUNTY, INC.

JIM & JAN MORAN FAMILY CENTER

Crisis Line: 954-761-1133 | Phone: 954-760-9800 | Fax: 954-832-9487 | TTY/TDD: 954-527-5385

P.O. Box 50187 Lighthouse Point, FL 33074

Learn more at www.womenindistress.org

Please remember Women In Distress in your will and estate planning.